

## Webinar Series: Understanding & addressing adolescent alcohol harm

This free webinar series, hosted by Alcohol Healthwatch and the Adolescent Health Research Group, will present new findings from the Youth2000 adolescent health survey. Leading experts will discuss what the findings mean for policy and community action to reduce alcohol harm among young people. We warmly invite policy makers, community leaders, youth workers and anyone with an interest in this important kaupapa to attend.

The series comprises four webinars. Registration for the webinars is here: <https://events.otago.ac.nz/aaah-webinar-2022/registration>. If you are unable to attend, a recording will be made available at [www.youth19.ac.nz/](http://www.youth19.ac.nz/).

### Webinar #3

## Understanding & addressing alcohol harm among Rainbow young people Tuesday 13 December 2022, 10-11am

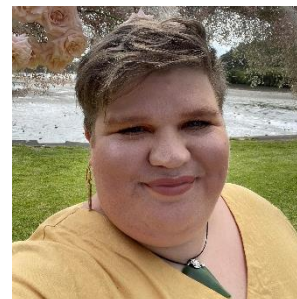
In this webinar, we will provide an overview of findings about alcohol use and harm among Rainbow young people at secondary school. We will present new findings about patterns of alcohol use, risk and protective factors for higher-risk drinking, and experiences of alcohol harm. The expert panel will consider what the findings mean for policy and community action to reduce alcohol harm. What can we do to make a difference?



**Tabby Besley**  
(she/her)



**Dr John Fenaughty**  
(he/him)



**Catherine Anderson**  
(they/them)

### Presenters and panellists

#### Tabby Besley (she/her)

Tabby is the Managing Director of InsideOUT; a national charity providing resources, education, and consultation and support for anything concerning Rainbow and Takatāpui communities. Tabby has just finished a counselling and addictions degree and works part-time as a counsellor with Rainbow young people, including those living with alcohol use disorders.

#### John Fenaughty (he/him)

John is a Queer Senior Lecturer in Counselling, Human Services and Social Work at the University of Auckland. John has worked in both community spaces and academia for decades. John heads the team behind the Identify survey; the first in-depth survey identifying the experiences of Rainbow young people and young adults in Aotearoa, and is also a member of the Adolescent Health Research Group.

#### Catherine Anderson (they/them)

Catherine is a Health Promotion Advisor at Alcohol Healthwatch, with a background working in Health Promotion and Communications at a Rainbow service provider. Catherine is a public health post-graduate student at AUT with a special interest in how queer people are represented in health statistics and research.

### SAVE THE DATE FOR WEBINAR #4!

**Webinar 4**  
**Understanding & addressing alcohol harm in**  
**Pasifika adolescents**  
Thursday 23 Feb 2023  
12pm–1pm

Register [here](#) to receive more details when they are available.

This webinar series has been made possible with funding from the nib foundation and Te Hiringa Hauora / The Health Promotion Agency.